

Pavane, 'The Earle of Salisbury' for four Violoncellos

William Byrd (1542-1623)

arr. M. Kamada

Musical score for Violoncello I, II, III, and IV, measures 1-6. The score is in common time (C) and features four staves. Violoncello I has a melodic line with some rests. Violoncello II has a steady bass line. Violoncello III has a more active melodic line. Violoncello IV has a simple bass line.

Musical score for Violoncello I, II, III, and IV, measures 7-13, section A. This section begins with a double bar line and a box labeled 'A'. The music continues with the same four staves, showing more complex rhythmic patterns and some syncopation.

Musical score for Violoncello I, II, III, and IV, measures 14-20, section B. This section begins with a double bar line and a box labeled 'B'. The music continues with the same four staves, featuring a mix of eighth and sixteenth notes.

Musical score for Violoncello I, II, III, and IV, measures 21-26, section C. This section begins with a double bar line and a box labeled 'C'. The music continues with the same four staves, showing a variety of rhythmic values and some rests.

Musical score for Violoncello I, II, III, and IV, measures 27-32. This section continues the piece with the same four staves, ending with a final cadence. The music features a mix of eighth and sixteenth notes, with some rests.

Violoncello I

Pavane, 'The Earle of Salisbury' for four Violoncellos

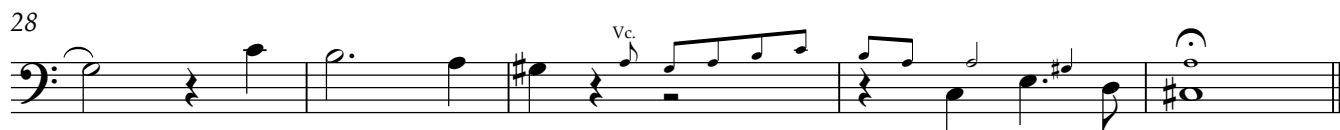
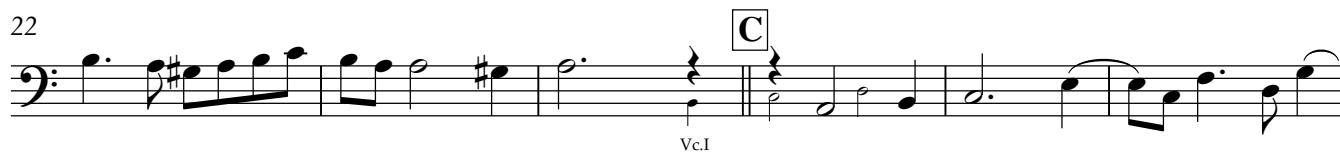
William Byrd (1542-1623)
arr. M. Kamada

The image displays the musical score for the first cello part of the piece. It consists of five staves of music in bass clef with a common time signature (C). The score includes several section markers: 'Vc.III' at the beginning, 'Vc.II' above the staff at measure 11, and boxed letters 'A', 'B', and 'C' above the staves at measures 7, 15, and 22 respectively. The music features a mix of eighth and sixteenth notes, with some rests and a final fermata at the end of the piece.

Pavane, 'The Earle of Salisbury' for four Violoncellos

William Byrd (1542-1623)

arr. M. Kamada

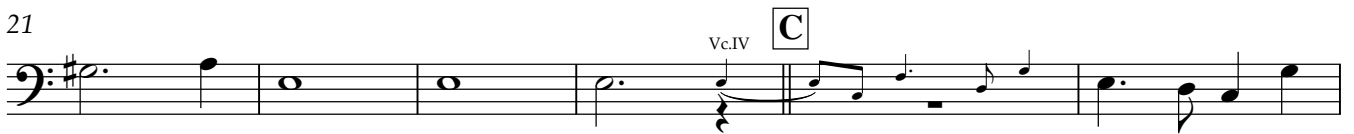


Violoncello III

Pavane, 'The Earle of Salisbury' for four Violoncellos

William Byrd (1542-1623)

arr. M. Kamada



Violoncello IV

Pavane, 'The Earle of Salisbury' for four Violoncellos

William Byrd (1542-1623)

arr. M. Kamada

